



Georges-Henri Florentin, CEO

Institute of Technology FCBA

Forêt, Cellulose, Bois construction, Ameublement
Forestry, Cellulose (pulp), Construction & Furniture

SIMWood Final Conference, Paris, 12.10.2017

FCBA's professional sectors



**FOREST –
SILVICULTURE**



**WOOD PROCUREMENT –
PRIMARY PROCESSING**



**TIMBER IN
CONSTRUCTION**



FURNITURE

Our core markets: Forestry, Logging operations and wood supply management, Sawmilling, Pulp & Paper, Packaging, Panel industry, Timber structures, Joinery, Building companies, Domestic and Professional furniture...

FCBA's professional sectors

"Core target and/or associated" markets

Forestry



Advanced silviculture

Biotechnologies

Wood procurement - primary processing



Logging operations

Pulp & Paper

Sawmilling

Panel Industry

Packaging

Secondary processing



Construction

Carpentry

Joinery

Builders

Furniture

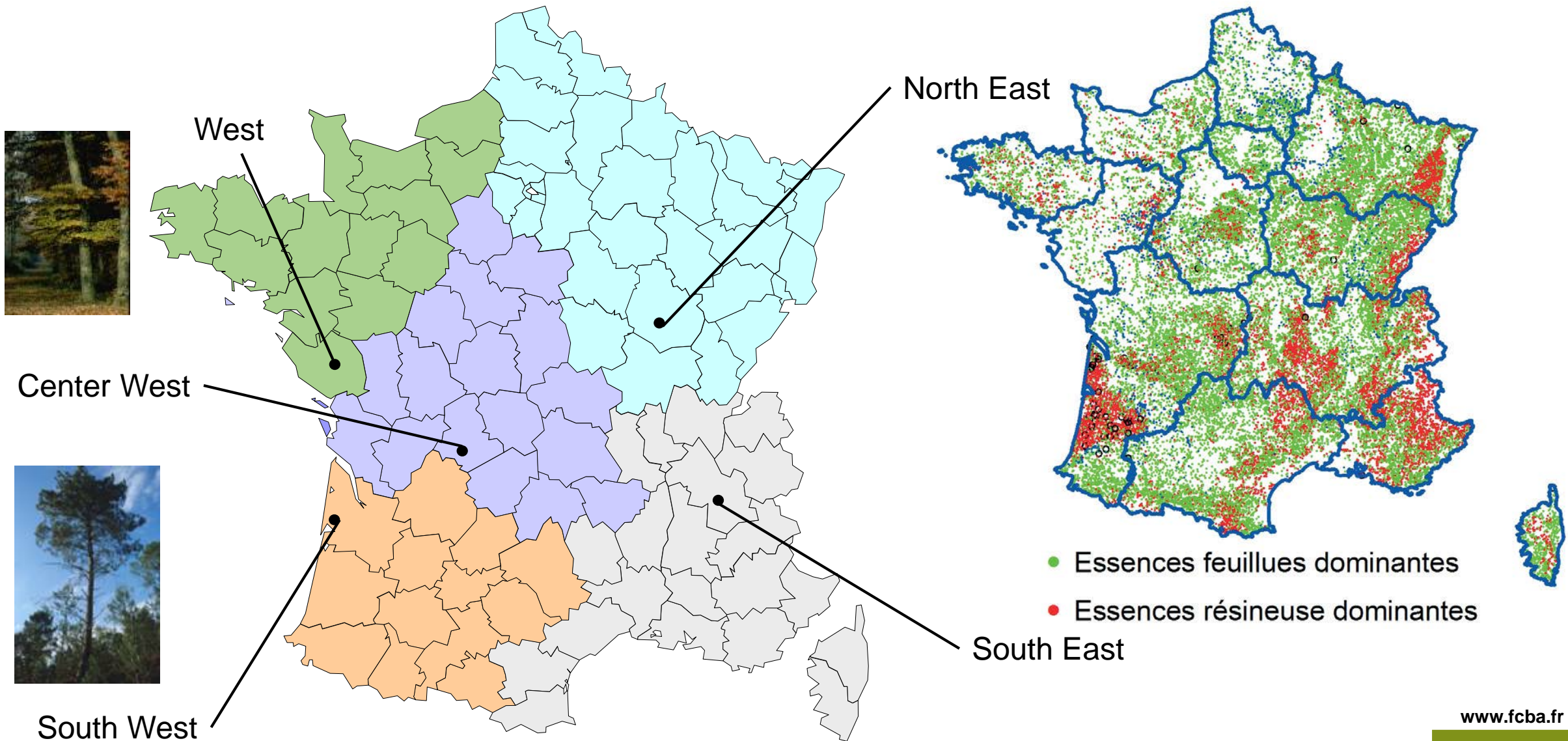
Domestic and professional furniture

Contributors markets

Dedicated to the 1st and 2nd transformation (suppliers)

Manufacturer of:
Machines
Chemical products
Hardware

FCBA's territorial delegations



FCBA's activities



Dissemination of
knowledge, training



Technical support,
consultancy



Research
&
Standardisation



The mark of
responsible forestry



Certification

FCBA' clients

- (All) Industries that use forest biomass = wood !
- Within the furniture sector, we work with all materials
- Inter-professional organisations (FBF, FBIE, IRB and Federations)
- French Ministries for: Agriculture, Industry, Research, Environment, Accommodation...
- Collective professional financing (CODIFAB, FBF, Pulp)
- French Regions, Communities
- Public agencies: ADEME, NFI, CRPF...
- Forestry managers and Forest owners: ONF, cooperatives, experts

Our innovation and research networks and partners

- National Competitive clusters: Xylofutur, Advancity, Fibres grand est...
- Other French Institutes: CSTB, CTP, EFPG, INRA, IRSTEA, CIRAD,...
- International partners: FP Innovation (Canada), LUKE and VTT (Finland), Skogforsk (Sweden), NiBIO (Norway), BRI (Japan), ...

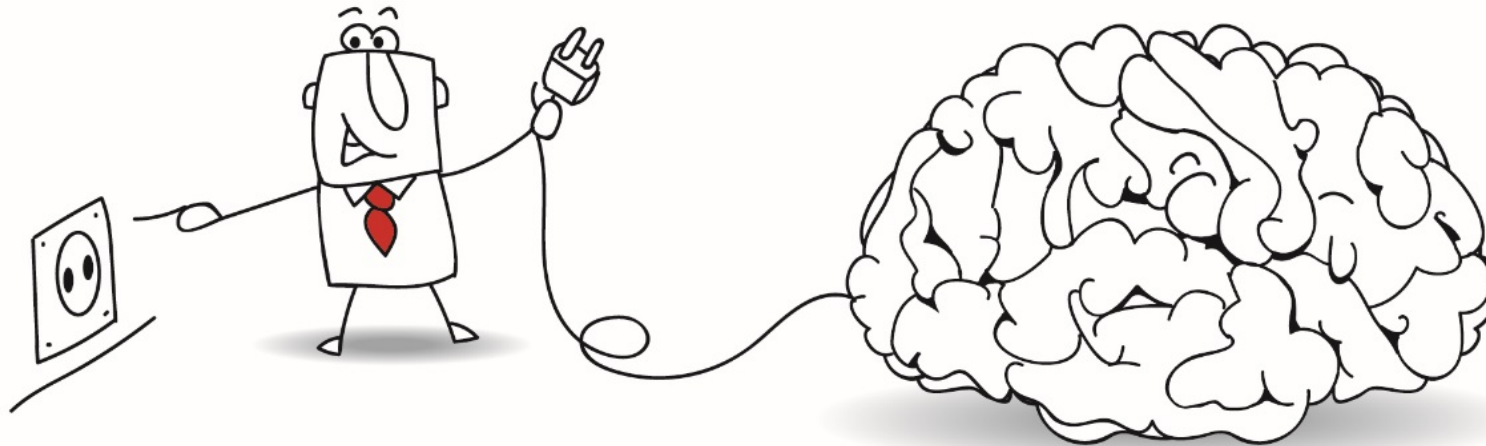
- And European



of course !

- International, national and European universities (U Bordeaux, U Paris-East...)
- Networks: Forest-based Sector Technology Platform, EFI, InnovaWood in Europe, IUFRO

> 150 innovation and research projects are running at FCBA / year



Our multi-dimension approach to support wood mobilisers



- ✓ Facilitate cooperation along the supply chain
- ✓ Consider the human factors and favor operators health and safety
- ✓ Co-develop adapted machineries and material
- ✓ Encourage the transition towards knowledge-based and ICT-supported operations
- ✓ Offer capacity building opportunities and multi-functional gains of performances

Working hand in hand with forest practitioners in

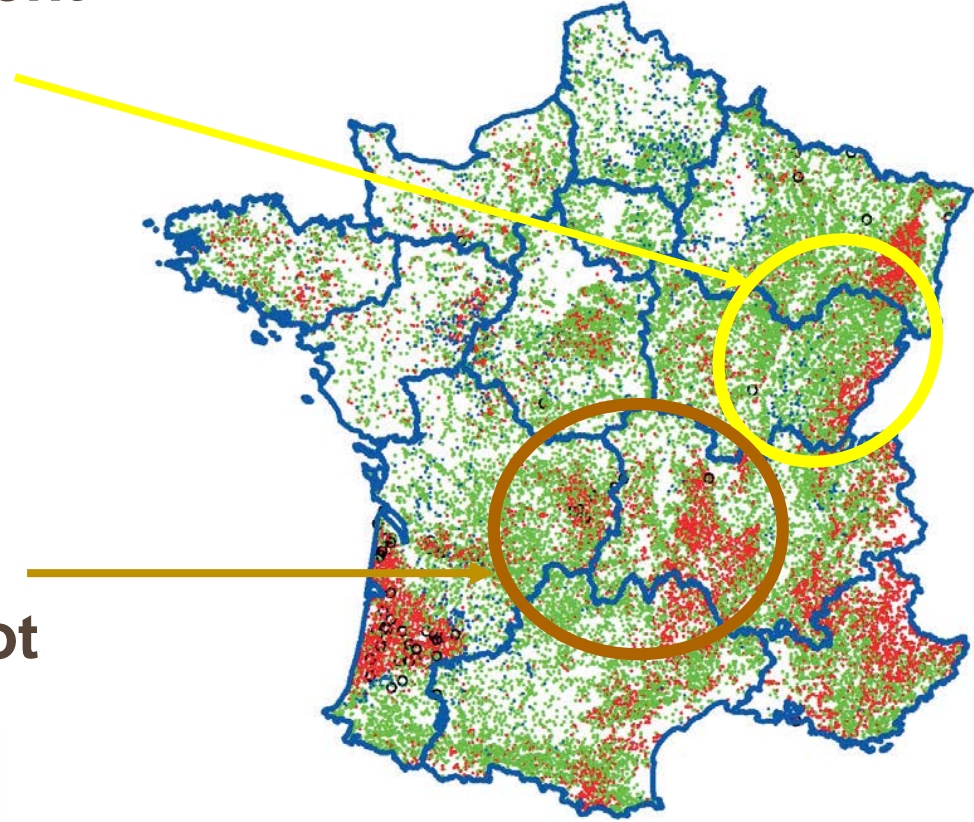
- ✓ Capacity building for a better and more efficient service offering to forest owners in special forest conditions: Env-friendly practices on sensitive soils in Grand Est



- ✓ Increasing professional know-how in steep terrain conditions: 75 beneficiaries of the Pilot Project in Massif Central



and others...





Thank you for your attention!

Georges-Henri Florentin, CEO

Georges-Henri.florentin@fcba.fr